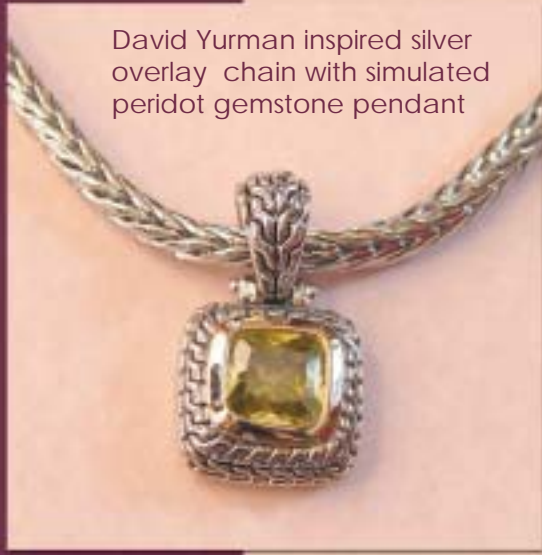


David Yurman inspired silver overlay chain with simulated peridot gemstone pendant



5 in 1 gold overlay necklace with simulated gemstones.

KD
Kostandina Designs

Become a Consultant.

Kostandina Designs gives you the opportunity to own your business and make your dreams come true.

Kostandina Designs is a unique cash-and-carry home party plan for beautiful, yet affordable jewelry. Consultants take no orders, and make no deliveries; and you earn 50% of all your sales. We are committed to providing on-going education to our consultants to help them grow their business.

Key Benefits to Kostandina Designs

- No orders - No deliveries
- Take home earnings after each party
- Minimal investment, large profit
- Manage your own time
- Training and marketing materials
- Make a possible average of \$50 per hour

For more information contact your sales consultant, or visit:

www.kostandinadesigns.com

Gold overlay heart-link bracelet with simulated diamond heart charm



Assort. stretch bracelet w/Austrian crystals



KD
Kostandina Designs

One Circle West Office Park
One Washington Crossing Rd
Pennington, NJ 08534

Jewelry to inspire your life.

www.kostandinadesigns.com



David Yurman inspired chain-link heart necklace with matching bracelet



Circle of love necklace with flower center.



Multi-chain, simulated aquamarine and peridot gemstones with silver slide



"The Diva" 18" chain with simulated gemstones

Looking for an extraordinary gift for that certain someone, special moment or occasion? We offer designer necklaces, bracelets and rings, as well as Men's stainless steel jewelry. With selections inspired from names like Tiffany's, David Yurman and many more, you can't go wrong. Please join us in an intimate atmosphere, among friends and see what Kostandina Designs has for you.



David Yurman inspired silver overlay chain with simulated pink topaz pendant



Tiffany inspired heart necklace with matching bracelet



16" silver overlay chain with Onyx pendant



Austrian Crystal stretch rings in 2 or 3 rows.



Tiffany inspired heart multi-chain necklace with matching bracelet



18" silver overlay chain with Abalone pendant